



# LABRADOR SOUTH HEALTH CENTRE PARKING LOT IMPROVEMENTS

LABRADOR GRENFELL HEALTH  
FORTEAU, NL

**Stantec Consulting Ltd.**  
141 Kelsey Drive  
St. John's, NL A1B 0L2  
Tel. (709) 576-1458  
Fax. (709) 576-2126  
stantec.com

**Issued for Tender:** August 16, 2019  
Project # 140132463

## DRAWING LIST

DWG #	Title
-------	-------

Dwgs. Prepared by Civil Consultant

C101	PROPOSED CIVIL SITE PLAN
C501	CIVIL DETAILS

- EXISTING ASPHALT TO REMAIN
- REMOVE AND REPLACE EX. ASPHALT WITH NEW ASPHALT (SEE DETAIL A SHEET C501)
- PROPOSED CULVERT
- EXISTING DITCH TO BE RESHAPED
- ROCK SWALE
- FLOW DIRECTION
- EXISTING SPOT ELEVATION
- PROPOSED SPOT ELEVATION

1. ALL WORK TO BE COMPLETED IN ACCORDANCE WITH THE GOVERNMENT OF NEWFOUNDLAND AND LABRADOR, DEPARTMENT OF TRANSPORTATION AND WORKS HIGHWAY DESIGN SPECIFICATION.
2. SEE DRAWING C501 FOR ADDITIONAL PROJECT NOTES.

Revision	By	Appd.	YY.MM.DD
0			
B			
A			

File Name:	Dwn.	Chkd.	Dsgn.	YY.MM.DD

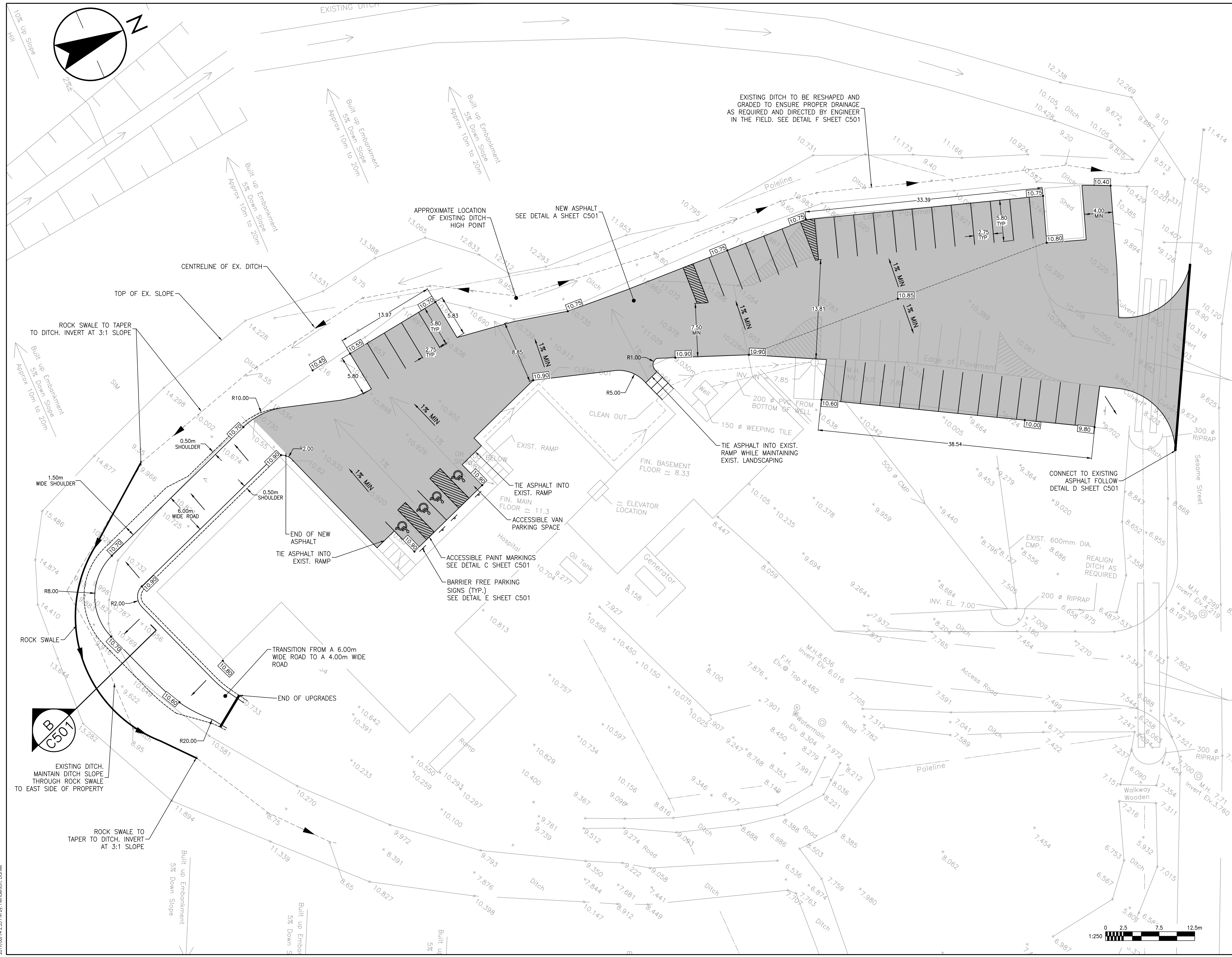
Permit-Seal

PROVINCE OF NEWFOUNDLAND AND LABRADOR  
ENGINEERING PERMIT J0291  
STANTEC CONSULTING LTD.  
05371  
Signature or Member Number (Member-in-Responsible Charge)

Client/Project  
LABRADOR GRENFELL HEALTH  
LABRADOR SOUTH HEALTH  
PARKING LOT IMPROVEMENTS  
FORTEAU, NL, CANADA

Title  
PROPOSED CIVIL SITE PLAN

Project No. 140132463	Scale 1:250
Drawing No. C101	Sheet 1 of 2
	Revision 0



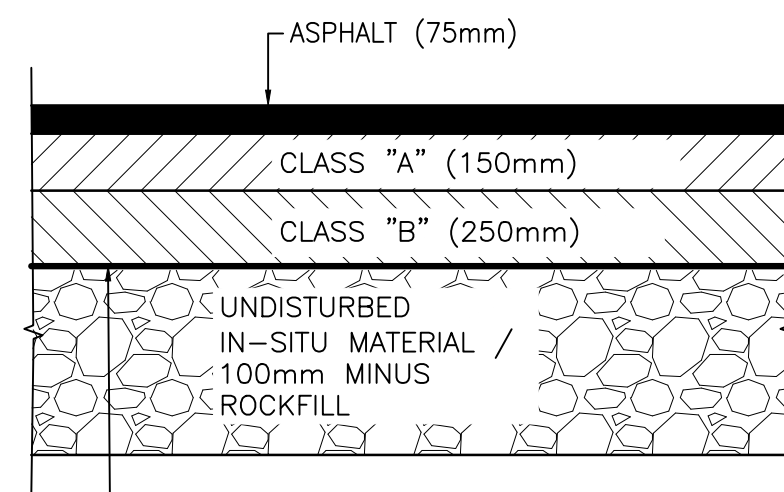
V:\S\140132463\140132463.dwg  
 2019/08/14 2:35 PM By: H.Boone (D:\Boone)

Copyright Reserved

The Contractor shall verify and be responsible for all dimensions. DO NOT scale the drawing - any errors or omissions shall be reported to Stantec without delay. The Copyrights to all designs and drawings are the property of Stantec. Reproduction or use for any purpose other than that authorized by Stantec is forbidden.

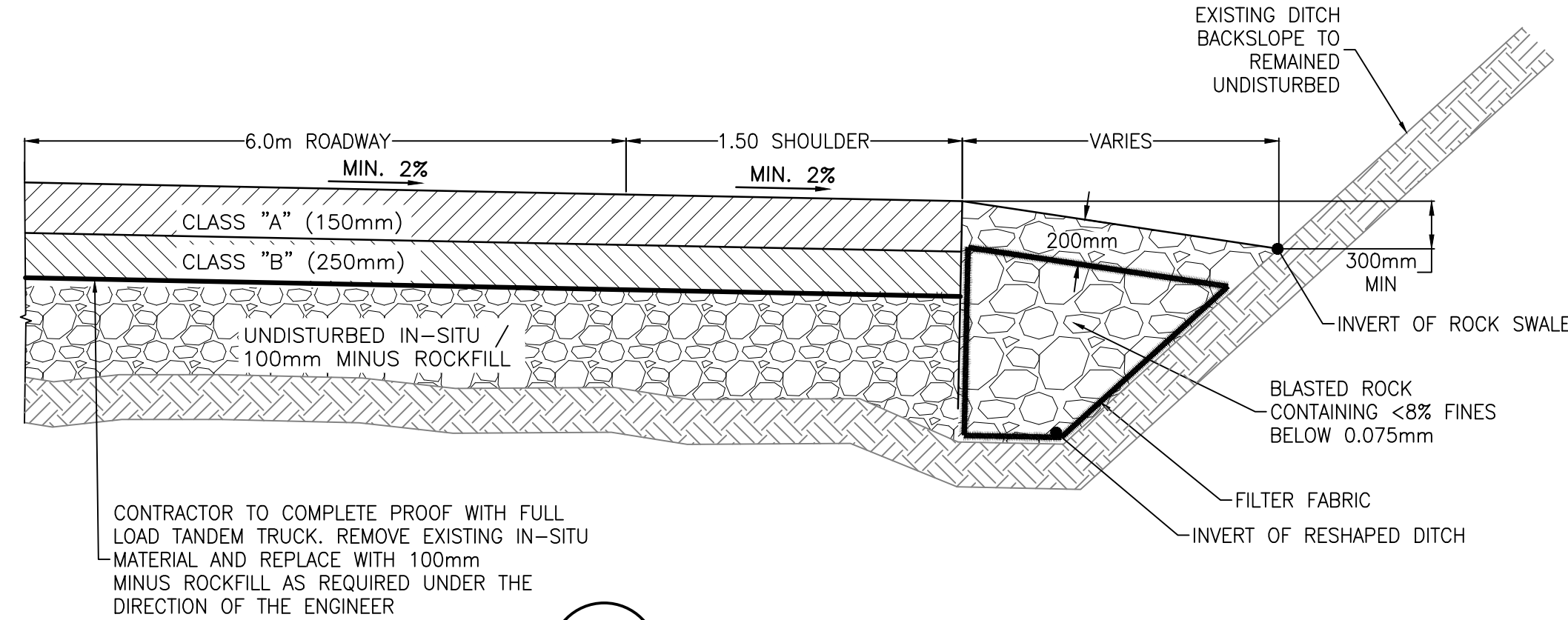
Notes

- ALL WORK TO BE COMPLETED IN ACCORDANCE WITH THE GOVERNMENT OF NEWFOUNDLAND AND LABRADOR DEPARTMENT OF TRANSPORTATION AND WORKS HIGHWAY DESIGN SPECIFICATIONS.
- CONTRACTOR TO VERIFY ALL DIMENSIONS AND CONDITIONS ON SITE BEFORE PROCEEDING WITH ANY PORTION OF THIS WORK. DO NOT SCALE FROM DRAWINGS.
- ALL DIMENSIONS ARE IN METERS UNLESS SPECIFIED OTHERWISE.
- GRADES AND CONDITIONS BASED ON EXISTING TOPOGRAPHIC SURVEY DRAWING 04-3099 PRODUCED BY GOODLAND SURVEYS, DATED NOVEMBER 16, 2004.
- ALL DISTURBED AREAS TO BE RETURNED TO ORIGINAL CONDITIONS OR BETTER.
- CONTRACTOR MUST SECURE SITE TO ENSURE PUBLIC SAFETY.
- CONTRACTOR TO PROVIDE EROSION AND SEDIMENT CONTROL MEASURES CONSISTING BUT NOT LIMITED TO SILT FENCING FOR DISTURBED AREAS. PROVISIONS OF CHECK DAMS AS REQUIRED FOR BERM WATER TO EXIT THE SITE.
- CONTRACTOR TO CONFIRM LOCATION OF BURIED COMMUNICATION CABLES AND ALL OTHER UNDERGROUND SERVICES PRIOR TO ANY DITCHING OR ANY TYPE OF EXCAVATION.
- AT AREAS INDICATING DITCHES TO BE CLEANED OF DEBRIS, EXCAVATED AND RESHAPED TO ENSURE PROPER FLOW. SEE DETAIL F ON SHEET C501.
- PLACE TACK COAT WHERE NEW ASPHALT CONNECTS TO EXISTING ASPHALT AND CONCRETE.
- SWEEP AND CLEAN WORK AREA UPON COMPLETION OF WORK.
- CONTRACTOR TO INSPECT AND AS REQUIRED CLEAN OUT ALL CULVERTS LOCATED WITHIN AND PROJECT AREA. IF THE CONTRACTOR IS UNABLE TO CLEAN OUT THE CULVERT BECAUSE OF DEBRIS OR DAMAGE TO THE CULVERT CONTRACTOR IT TO NOTIFY THE ENGINEER.
- AT AREAS INDICATED FOR NEW ASPHALT, CONTRACTOR TO REMOVE EXISTING ASPHALT AND GRANULARS TO THE BOTTOM OF CLASS "B" AS SPECIFIED ON DETAIL A ON DRAWING C501. THE CONTRACTOR IS THEN TO COMPLETE A PROOF ROLL OF THE EXISTING BASE MATERIAL UNDER SUPERVISION OF THE ENGINEER, AS DIRECTED BY THE ENGINEER. THE CONTRACTOR IS TO SUB-EXCAVATE AND REPLACE WITH 100mm MINUS ROCKFILL.



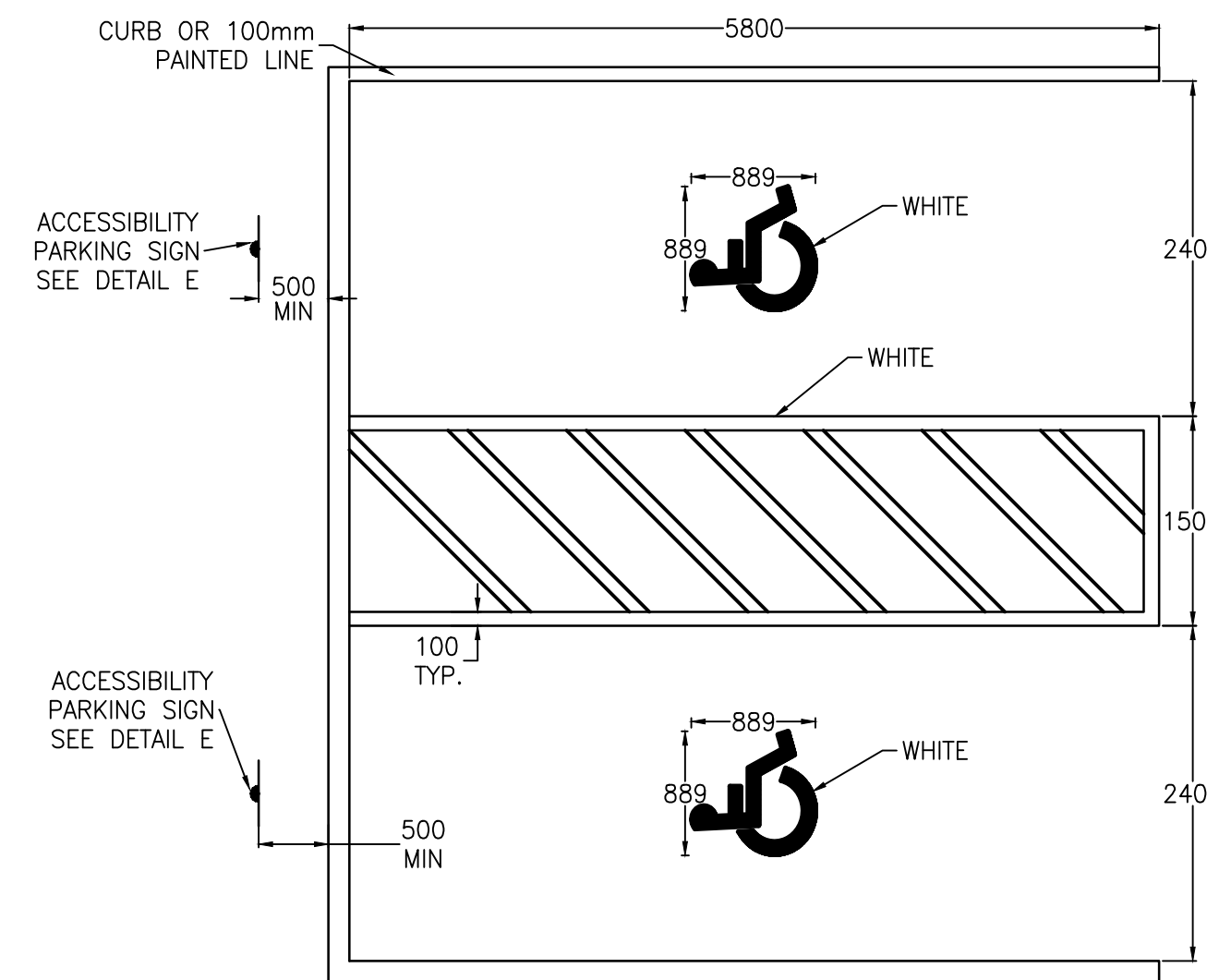
CONTRACTOR TO COMPLETE PROOF WITH FULL LOAD TANDEM TRUCK ON PROPOSED SUBGRADE. REMOVE EXISTING IN-SITU MATERIAL AND REPLACE WITH 100mm MINUS ROCKFILL AS REQUIRED UNDER THE DIRECTION OF THE ENGINEER

**A** TYPICAL ASPHALT DETAIL  
C101 NTS



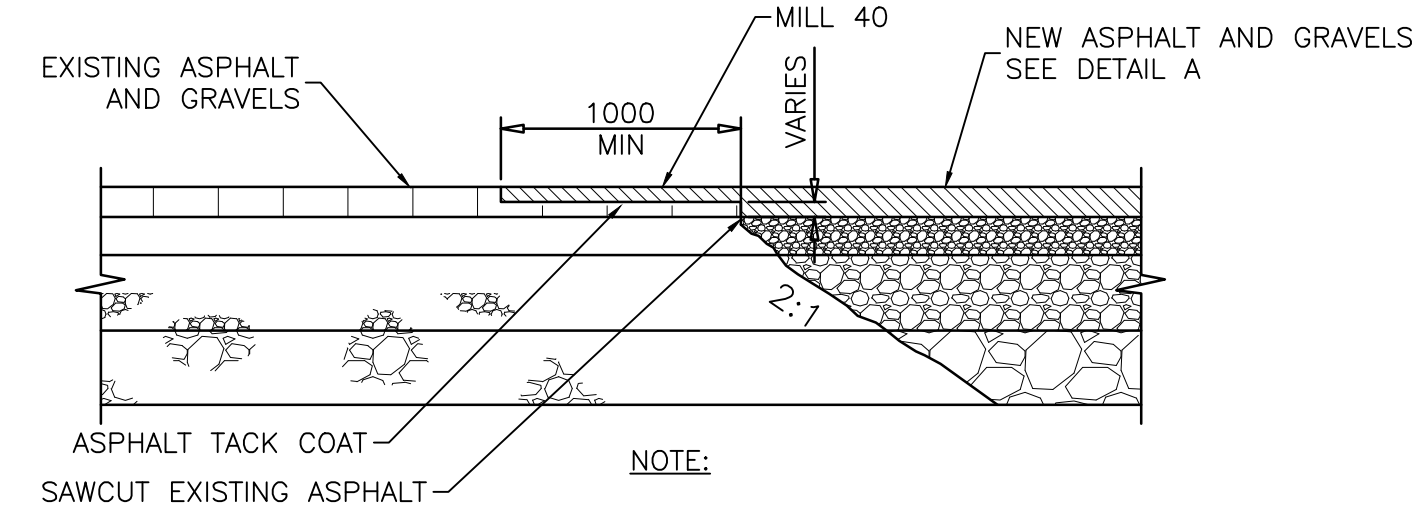
CONTRACTOR TO COMPLETE PROOF WITH FULL LOAD TANDEM TRUCK. REMOVE EXISTING IN-SITU MATERIAL AND REPLACE WITH 100mm MINUS ROCKFILL AS REQUIRED UNDER THE DIRECTION OF THE ENGINEER

**B** SECTION 1  
C101 NTS



NOTES:  
1. ALL ACCESSIBLE PARKING SPACES TO BE PAINTED WITH WHITE 100mm WIDE LINE PAINTING.  
2. INCREASE STALL WIDTH TO 2.6m FOR VAN PARKING. INCREASE AISLE WIDTH TO 2.0m FOR ADJACENT VAN PARKING.

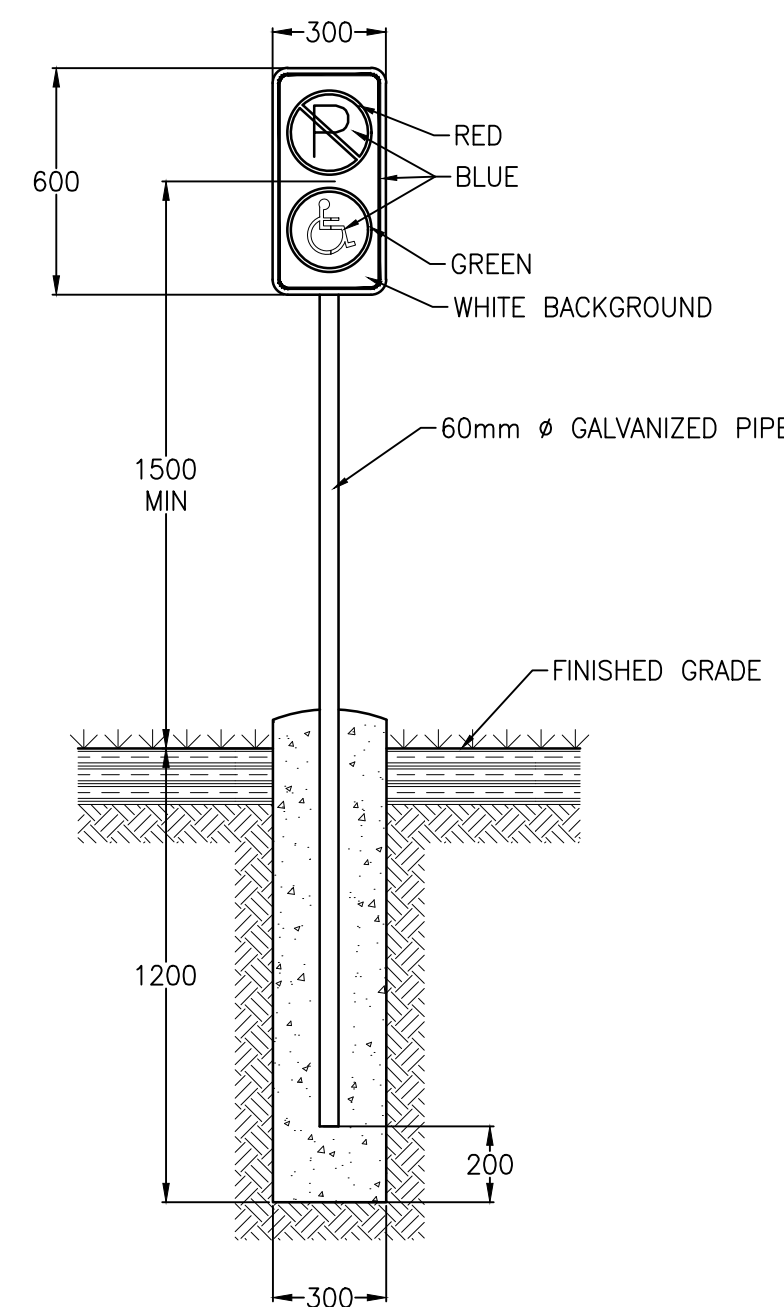
**C** TYPICAL ACCESSIBLE PARKING SPACE  
C101 NTS



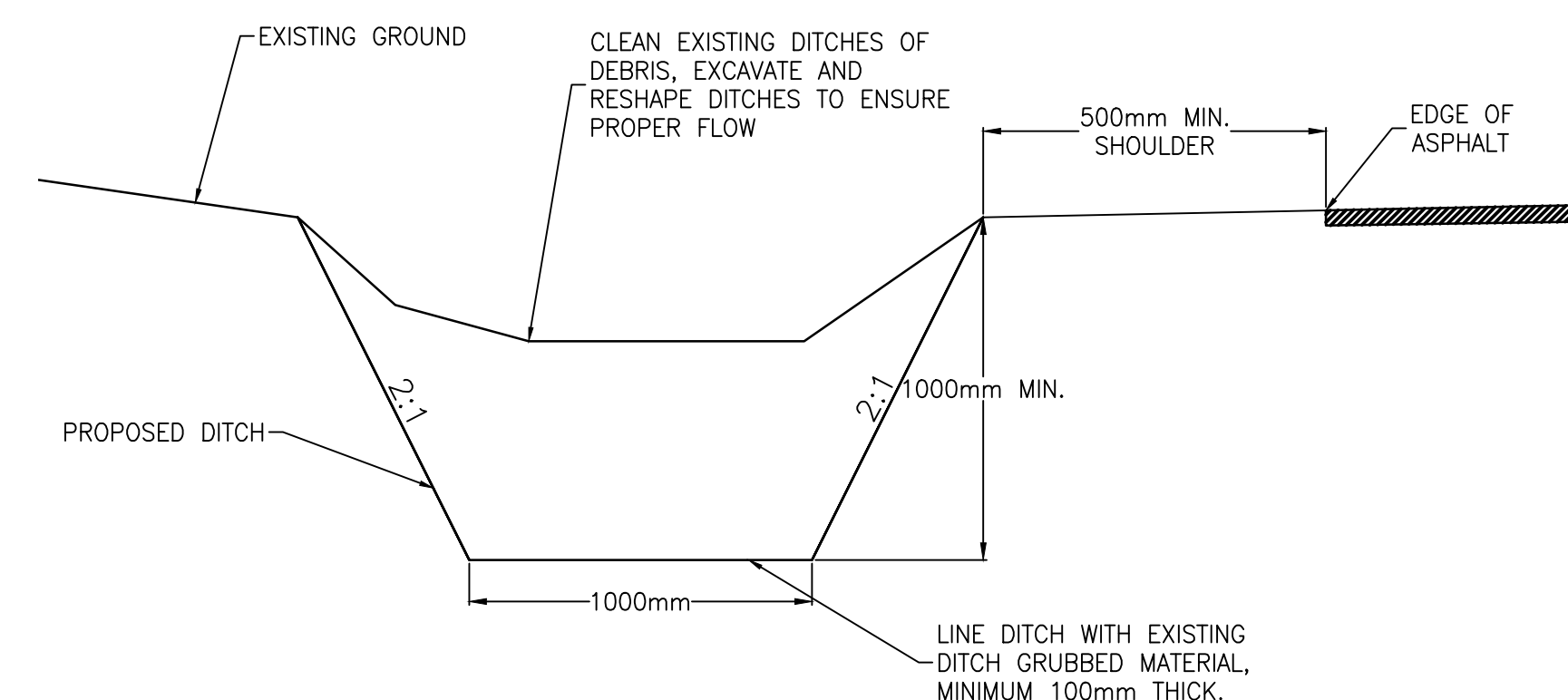
NOTE:

SAWCUT EXISTING ASPHALT TO MAKE VERTICAL CLEAN JOINT EDGES 40 x 1000 KEY. PLACE AND COMPACT NEW GRAVELS. MILLED TO RECEIVE ASPHALT TACK. NEW ASPHALT TO DEPARTMENTAL REPRESENTATIVE'S FULL SATISFACTION. MATCH EXISTING. DIMENSIONS IN mm. REFER TO NOTE 18 ON C101.

**D** ASPHALT JOINT DETAIL  
C101 NTS



**E** TYPICAL ACCESSIBLE PARKING SIGNAGE  
C101 NTS



**F** TYPICAL RESHAPING DITCH DETAIL  
C101 NTS

Revision	By	Appd.	YY.MM.DD
0			
B			
A			
Issued			

File Name:	Dwn.	Chkd.	Disgn.	YY.MM.DD

Permit-Seal

PROVINCE OF NEWFOUNDLAND AND LABRADOR  
REGISTERED PROFESSIONAL ENGINEER  
CHRISTOPHER W. BOONE  
05371  
Signature or Member Number (Member-in-Responsible Charge)

Client/Project  
LABRADOR GRENFELL HEALTH  
LABRADOR SOUTH HEALTH  
PARKING LOT IMPROVEMENTS  
FORTEAU, NL, CANADA

CIVIL DETAILS

Drawing No.	Sheet	Revision
140132463	AS SHOWN	
C501	2 of 2	0