



Labrador-Grenfell
Health

Breastfeeding Support Services Happy Valley – Goose Bay

REGIONAL LACTATION CONSULTANT

Chantelle McGrath BScN RN IBCLC
Labrador-Grenfell Health, Labrador West Health Centre
Phone #: (709) 285-8206
Chantelle.McGrath@lghealth.ca

COMMUNITY HEALTH

Labrador-Grenfell Health, Labrador Health Centre
Phone #: (709) 897-2331 to speak to a Public Health Nurse



INPATIENT DEPARTMENT SERVICES - NURSING

Labrador-Grenfell Health, Labrador Health Centre
Phone #: (709) 897-2210

OUTPATIENT DEPARTMENT SERVICES - NURSING

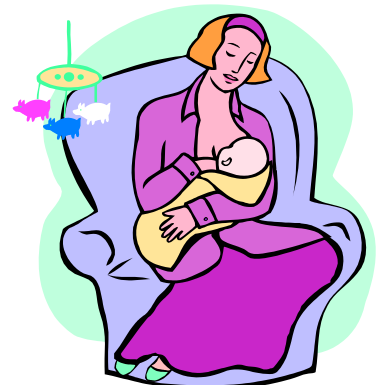
Labrador-Grenfell Health, Labrador Health Centre
Phone #: (709) 897-2115 or (709) 897-2174

Breastfeeding Moms Support Group

Aboriginal Family Center
Healthy Baby Club Resource Mother
709-896-4398

LEADER, LA LECHE LEAGUE CANADA – LABRADOR GROUP

Jodi MacPhail
Phone #: (709) 899-0550
lllc.jodi@gmail.com



TELEPHONE / INTERNET INFORMATION SERVICES



babyfriendlynl.ca
Baby-Friendly Newfoundland and Labrador



Dial 811

TTY:1-888-709-3555-Service bilingual

OTHER INTERNET RESOURCES

- **Breastfeedinginc.ca** –
- **lllc.ca** – La Leche League Canada
- **firststepsfrc.com** – First Steps Family Resource Centre Webpage with up to date schedules and contact information
- **Breastfeeding Moms NL** – Facebook Group



REVISED SEPT. 2022