



Labrador-Grenfell
Health

Breastfeeding Support Services Labrador West

REGIONAL LACTATION CONSULTANT

Chantelle McGrath BScN RN IBCLC
Labrador-Grenfell Health, Labrador West Health Centre
Phone #: (709) 285-8206
Chantelle.McGrath@lghealth.ca



COMMUNITY HEALTH

Labrador-Grenfell Health, Labrador West Health Centre
Phone #: (709) 285-8321 to speak to a Public Health Nurse

INPATIENT DEPARTMENT SERVICES - NURSING

Labrador-Grenfell Health, Labrador West Health Centre
Phone #: (709) 285-8249

OUTPATIENT DEPARTMENT SERVICES - NURSING

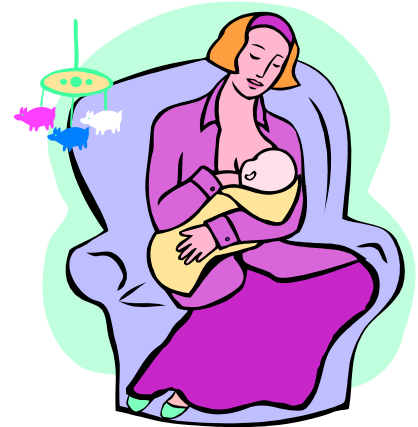
Labrador-Grenfell Health, Labrador West Health Centre
Phone #: (709) 285-8100

Breastfeeding Moms Support Group

First Steps Family Resource Centre
Mondays 12pm – 2pm
For more information, contact the Family Resource Centre
Resource Mom: Jennifer Byrne

firststepsfrc.com

Phone #: (709) 944-7477



LEADER, LA LECHE LEAGUE CANADA – LABRADOR GROUP

Jodi MacPhail
Phone #: (709) 899-0550
lllc.jodi@gmail.com

TELEPHONE / INTERNET INFORMATION SERVICES



Baby-Friendly
Newfoundland & Labrador

babyfriendlynl.ca

Baby-Friendly Newfoundland and Labrador



Dial 811

TTY: 1-888-709-355- Service bilingual

Your Health. Your Call

OTHER INTERNET RESOURCES

- **Breastfeedinginc.ca**
- **lllc.ca** – La Leche League Canada
- **firststepsfrc.com** – First Steps Family Resource Centre Webpage with up to date schedules and contact information
- **Breastfeeding Moms NL** – Facebook Group



BREAST PUMP LENDING PROGRAM

First Steps Family Resource Centre

Phone #: 1 (709) 944-7477