



Labrador-Grenfell
Health

Breastfeeding Support Services St. Anthony and Surrounding Area

REGIONAL LACTATION CONSULTANT

Chantelle McGrath BScN RN IBCLC

Labrador-Grenfell Health, Labrador West Health Centre

Phone #: (709) 285-8206

Chantelle.McGrath@lghealth.ca

COMMUNITY HEALTH

Labrador-Grenfell Health, Charles S. Curtis Memorial Hospital

Phone #: (709) 454-7392 to speak to a Public Health Nurse



INPATIENT DEPARTMENT SERVICES - NURSING

Labrador-Grenfell Health, Charles S. Curtis Memorial Hospital

Phone #: (709) 454-3333 obs/gyn extension 7157 or 7182

OUTPATIENT DEPARTMENT SERVICES - NURSING

Labrador-Grenfell Health, Charles S. Curtis Memorial Hospital

Phone #: (709) 454-3333 extension 7143

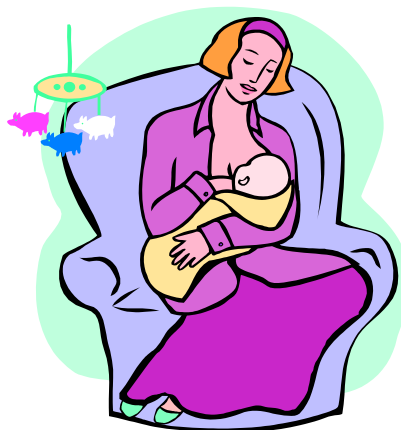
Breastfeeding Moms Support Group

St. Anthony Family Resource Centre (FRC)

Fridays 10:00 (Dorm Building Basement)

For more information, contact the Family Resource Centre at 709-454-3122

<http://norpenfrc.ca/ourprograms.asp>



TELEPHONE / INTERNET INFORMATION SERVICES



babyfriendlynl.ca
Baby-Friendly Newfoundland and Labrador



Dial 811
TTY: 1-888-709-3555- Service bilingual

OTHER INTERNET RESOURCES

- **Breastfeedinginc.ca**
- **lllc.ca** – La Leche League Canada
- **firststepsfrc.com** – First Steps Family Resource Centre Webpage with up to date schedules and contact information
- **Breastfeeding Moms NL** – Facebook Group



REVISED AUGUST 2022