



Labrador-Grenfell  
**Health**

# Breastfeeding Support Services Happy Valley – Goose Bay

## **Regional Lactation Consultant**

Chantelle McGrath, BScN RN IBCLC  
Labrador-Grenfell Health, Labrador West Health Centre  
Phone #: (709) 285-8206  
Chantelle.McGrath@lghealth.ca

## **Community Health Department**

Labrador-Grenfell Health, Labrador Health Centre  
Phone #: (709) 897-2331 to speak to a Public Health Nurse

## **Inpatient Department Services - Nursing**

Labrador-Grenfell Health, Labrador Health Centre  
Phone #: (709) 897-2210

## **Outpatient Department Services - Nursing**

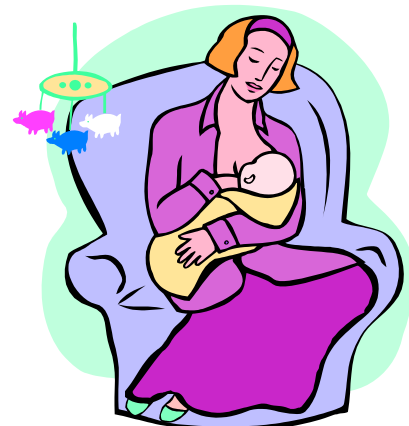
Labrador-Grenfell Health, Labrador Health Centre  
Phone #: (709) 897-2115 or (709) 897-2174

## **Breastfeeding Moms Support Group**

Aboriginal Family Center  
Healthy Baby Club Resource Mother  
709-896-4398

## **La Leche League Canada – Labrador Group**

Jodi MacPhail, Leader  
Phone #: (709) 899-0550  
lllc.jodi@gmail.com



## TELEPHONE / INTERNET INFORMATION SERVICES



**babyfriendlynl.ca**  
Baby-Friendly Newfoundland and Labrador



**Dial 811**

TTY:1-888-709-3555-Service bilingual

### Other Internet Resources

- **Breastfeedinginc.ca**
- **lllc.ca** – La Leche League Canada
- **firststepsfrc.com** – First Steps Family Resource Centre Webpage with up to date schedules and contact information.
- **Breastfeeding Moms NL** – Facebook Group



REVISED SEPT. 2022